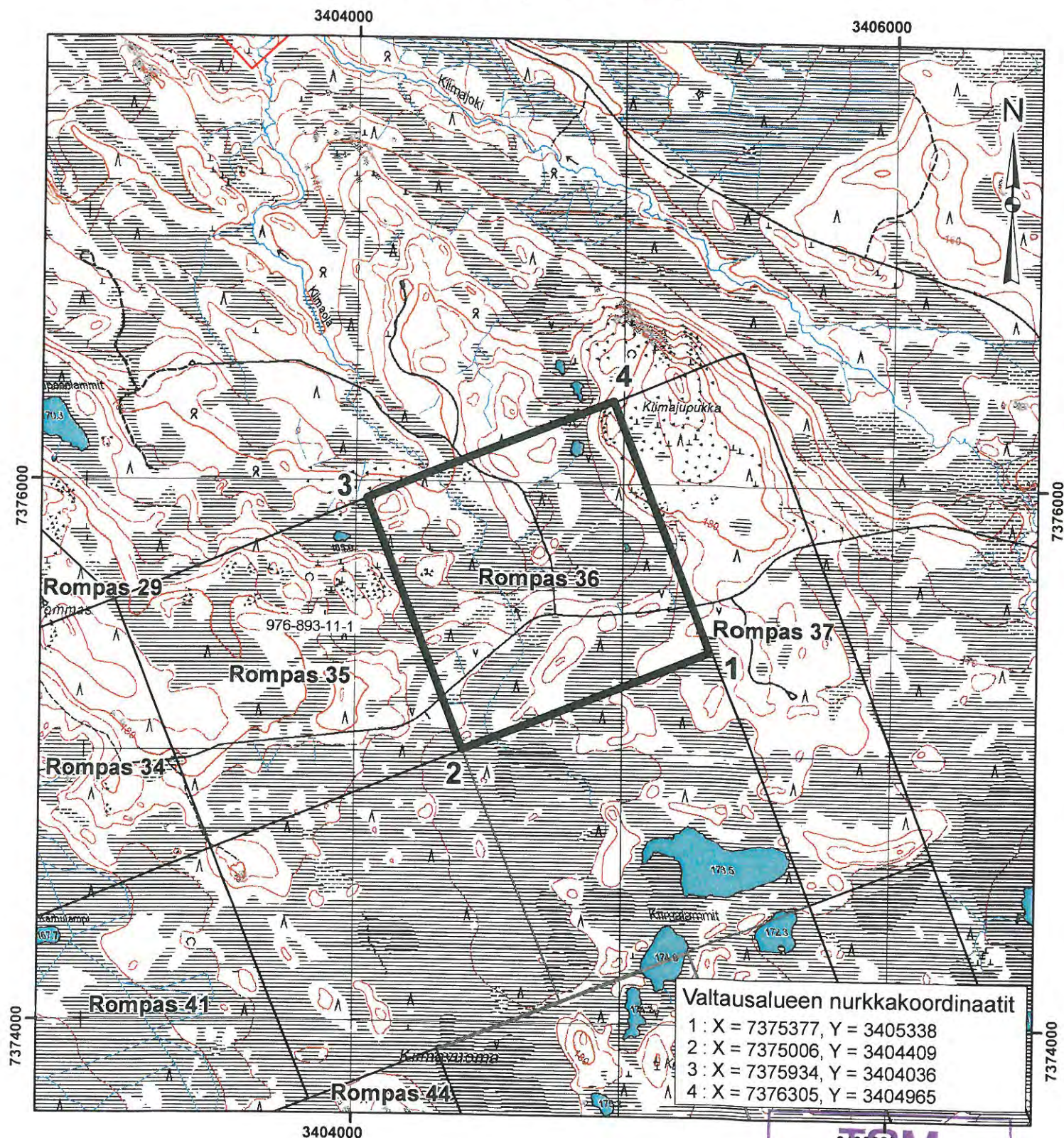


Rompas 36



Rompas 36

Pinta-ala : 100 ha

Liite 2 valtaushakemukseen




Rompas (1 - 46)

15.10.2009

0 0,5 1 Kilometri

1 : 20 000

Karttaprojektio : KKKJ3

-  Valtausalue
-  Muut_valtausalueet
-  Tilan_raja

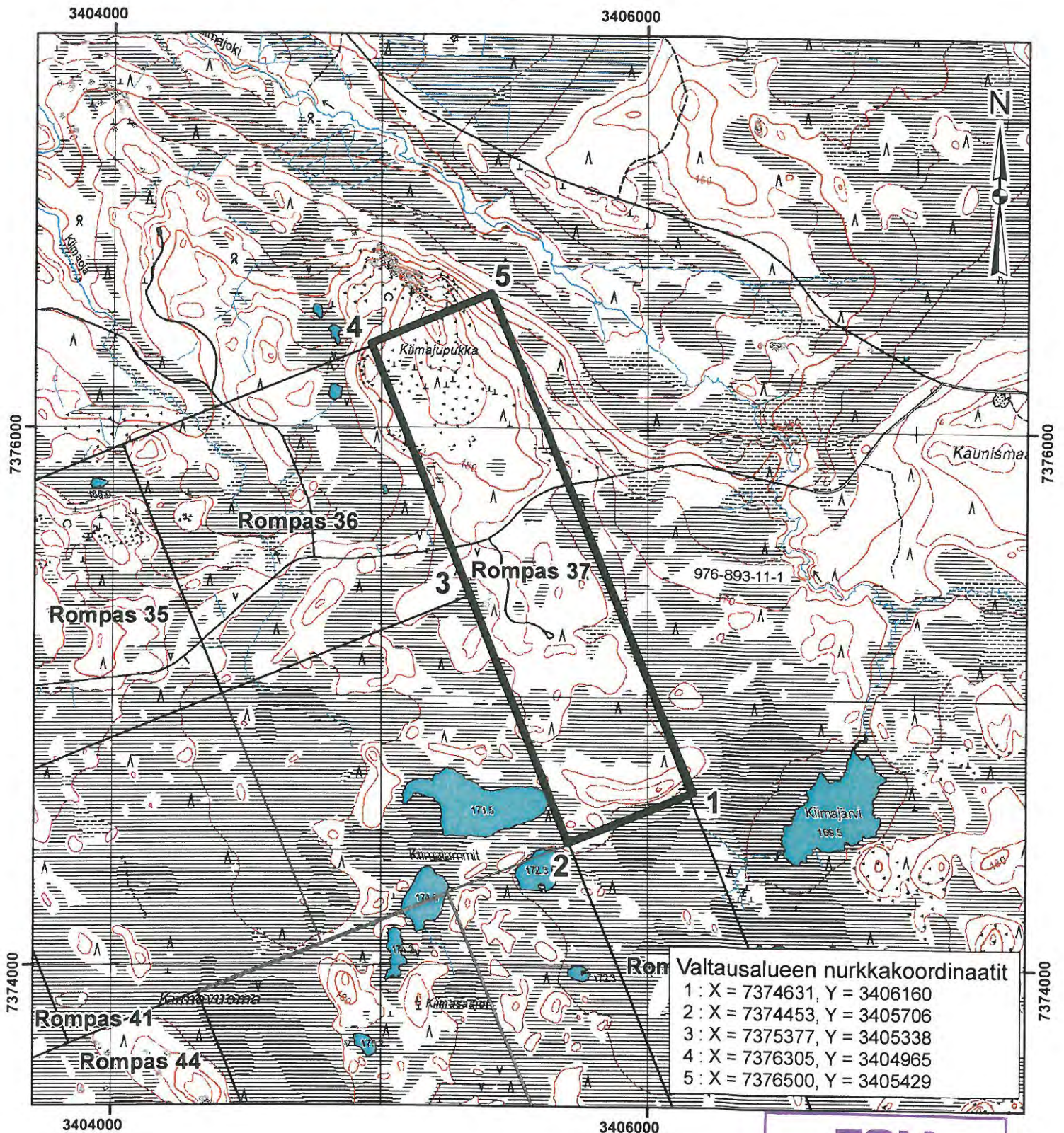


AREVA Resources Finland Oy

08.10.2009

TOM
15. 10. 2009

Rompas 37



Rompas 37

Pinta-ala : 98,93 ha

Liite 2 valtaushakemukseen

Rompas (1 - 46)

15.10.2009

0 0,5 1 Kilometri

1 : 20 000

Karttaprojektio : KKJ3

- Valtausalue
- Muut_valtausalueet
- Tilan_raja

TEM

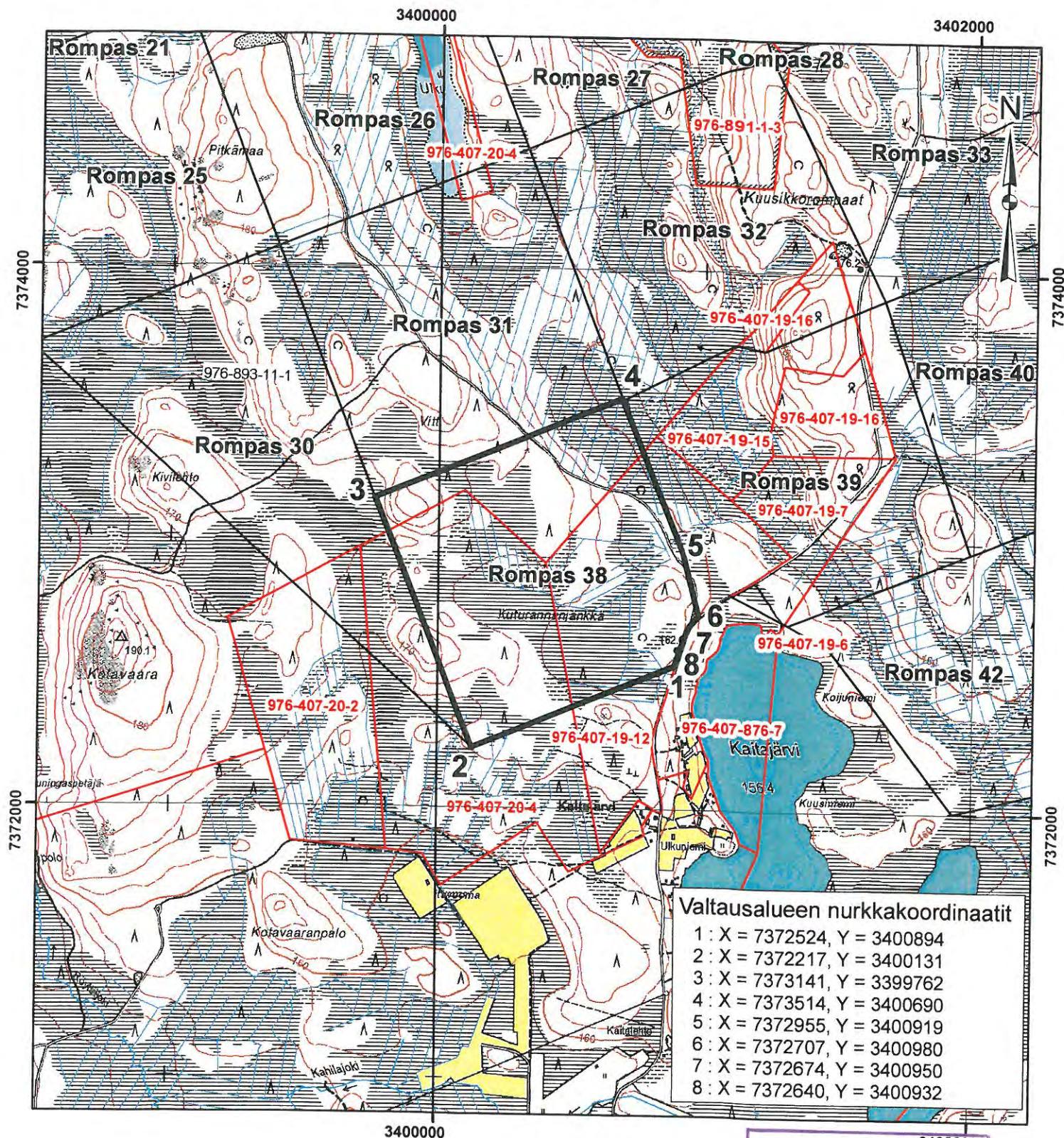
15. 10. 2009

AREVA

AREVA Resources Finland Oy

08.10.2009

Rompas 38



Rompas 38

Pinta-ala : 97,75 ha

Liite 2 valtaushakemukseen




Rompas (1 - 46)

15.10.2009

0 0,5 1 Kilometri

1 : 20 000

Karttaprojektio : KKJ3

-  Valtausalue
-  Muut_valtausalueet
-  Tilan_raja

TEM

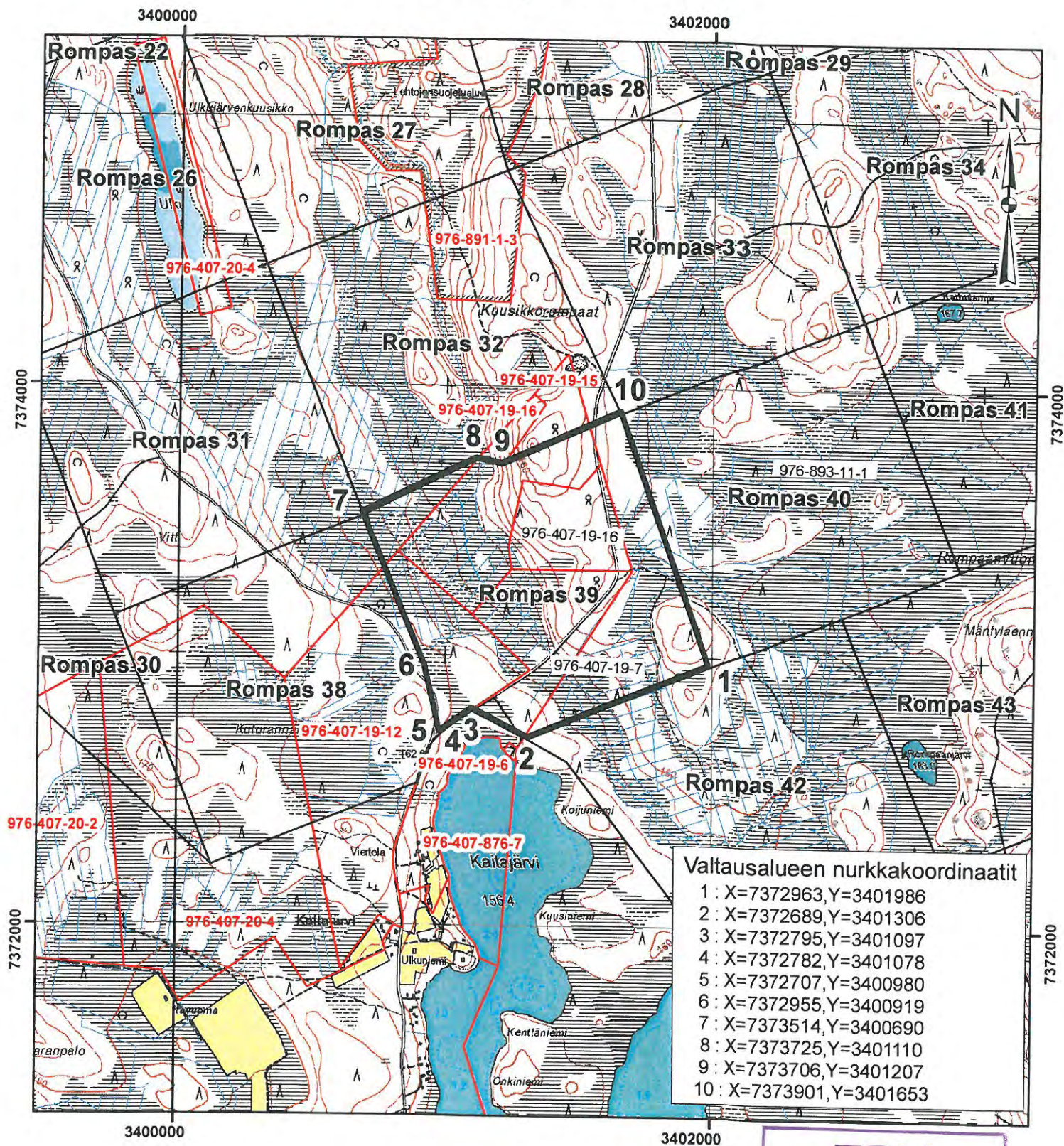
15. 10. 2009

AREVA

AREVA Resources Finland Oy

08.10.2009

Rompas 39



Rompas 39

Pinta-ala : 98,97 ha

Liite 2 valtaushakemukseen




Rompas (1 - 46)

15.10.2009

0 0,5 1 Kilometri

1 : 20 000

Karttaprojektio : KKJ3

-  Valtausalue
-  Muut_valtausalueet
-  Tilan_raja

TEM

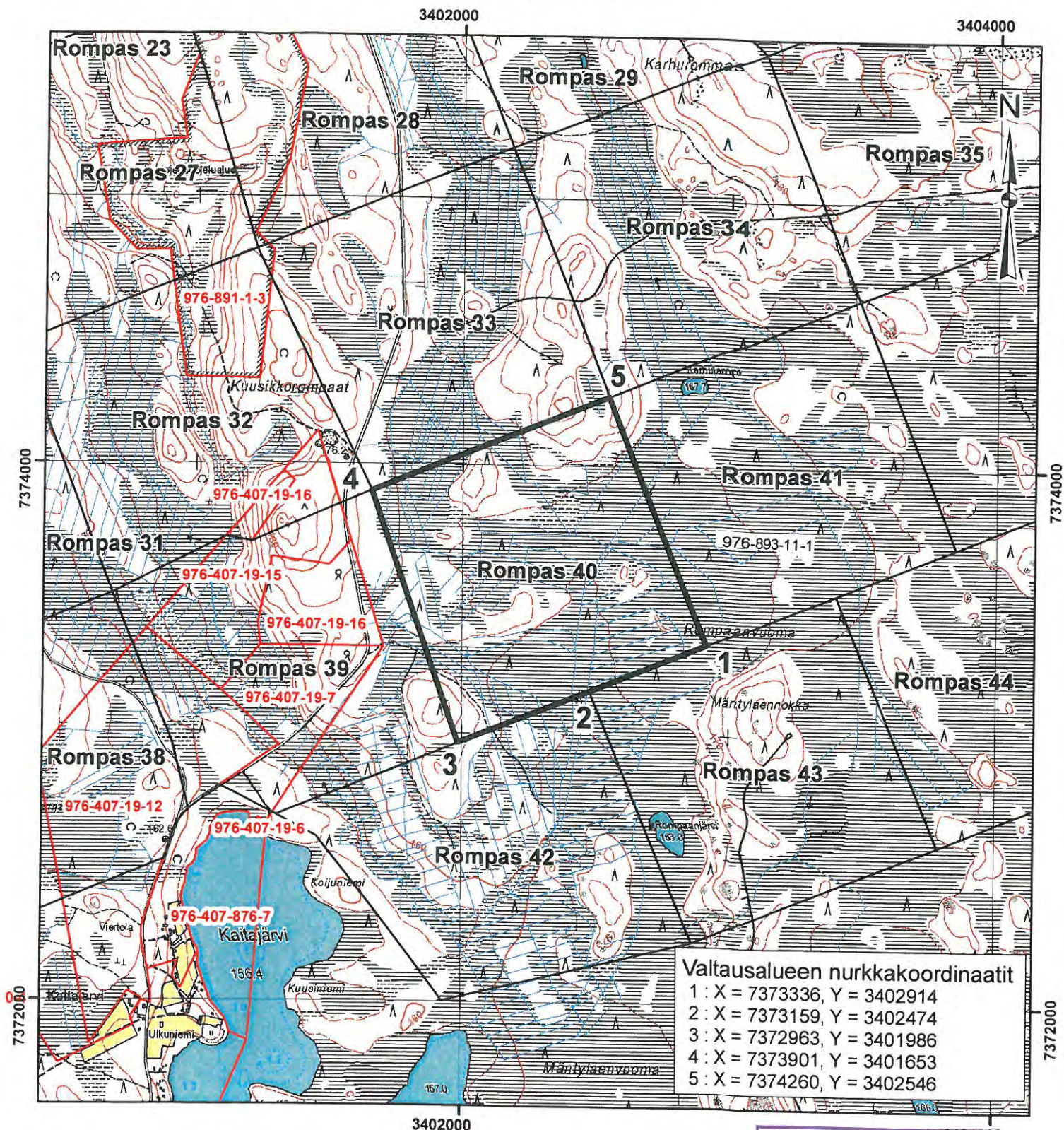
15.10.2009

AREVA

AREVA Resources Finland Oy

08.10.2009

Rompas 40



Rompas 40

Pinta-ala : 97,54 ha

Liite 2 valtaushakemukseen




Rompas (1 - 46)

15.10.2009

0 0,5 1 Kilometri

1 : 20 000

Karttaprojektio : KKJ3

-  Valtausalue
-  Muut_valtausalueet
-  Tilan_raja

TEM

15. 10. 2009


AREVA

AREVA Resources Finland Oy

08.10.2009